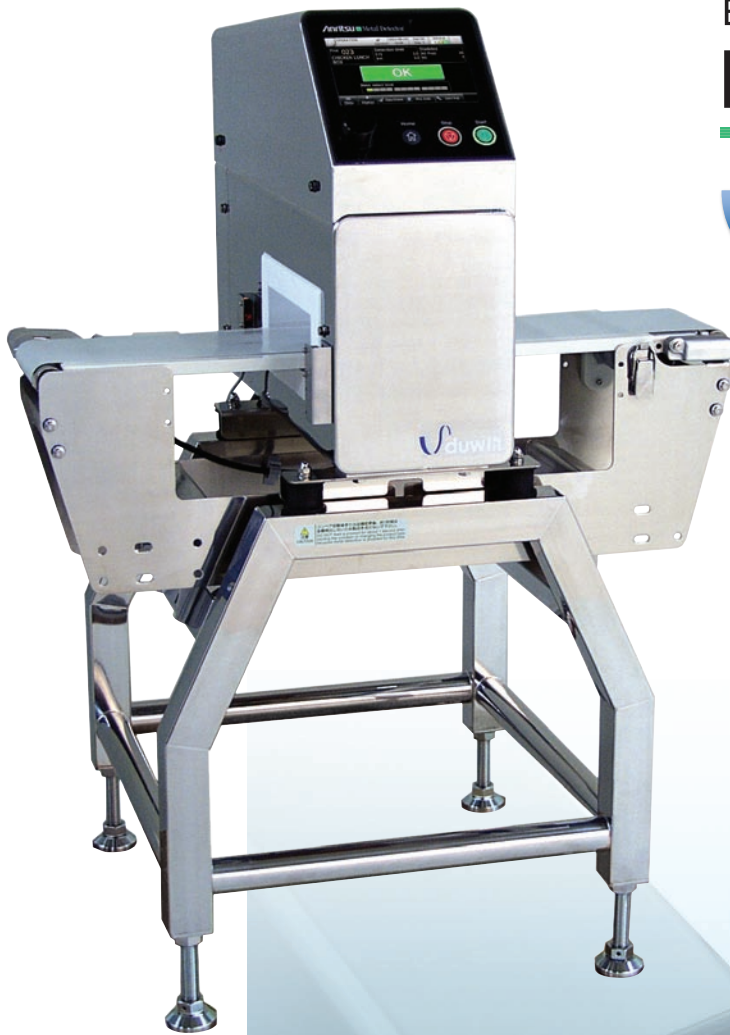


Easy to use

Metal Detector

 Dual wave technology



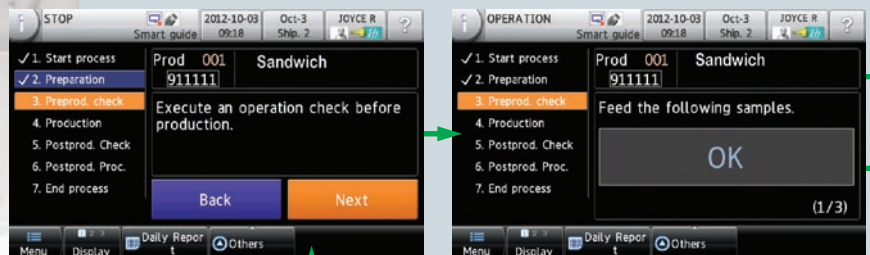
Enhanced quality control and HACCP reporting

Intuitive touch screen operation minimizes user errors

Shows the current production phase

● Easy-to-follow navigation

Even inexperienced operators can easily perform daily operation checks and maintenance by following the step-by-step on-screen instructions.



Manual data collection is no longer required

E-daily report

Production status is displayed in real time. The data can be transferred to a PC via USB to output in CSV format. Eliminating manual data collection eliminates possible recording errors.

Automatic recording of production data, line monitoring, for higher level quality control, refer to **QUICCA**

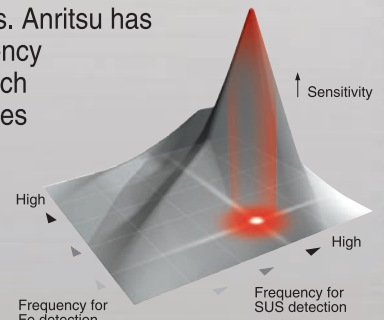
Delivering safety, security and “peace of mind” to consumers

Anritsu's exclusive metal detection technology

Proper frequencies are chosen for both ferrous and non-ferrous/stainless steel metals.

Dual wave technology

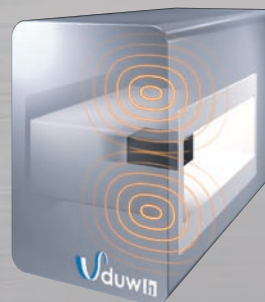
Since metals respond differently to different magnetic field frequencies, it is difficult for conventional single frequency systems to detect both ferrous and non-ferrous metals. Anritsu has patented a dual-frequency inspection system, which automatically determines the best frequencies to maximize sensitivity for both ferrous and non-ferrous metals simultaneously.



High sensitivity and high stability

Optimized head design

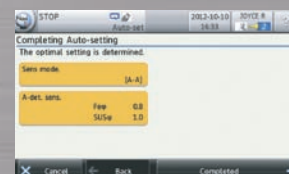
With detection software tuned for the improved head, the duw-h series supports three times better signal to noise ratio and an increase in contaminant detection by two ranks (in-house comparison).



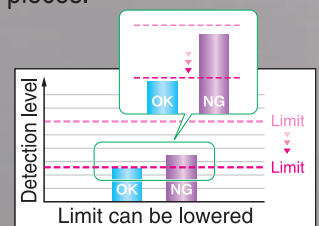
Enhanced automatic settings

The highest performance achieved by anyone

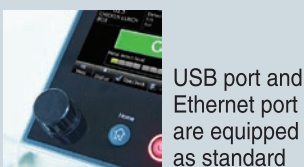
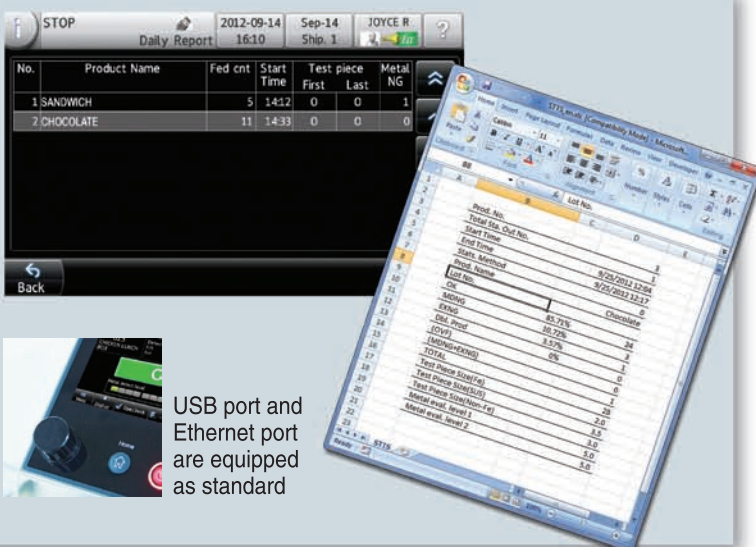
Automatically analyzes product and contaminant properties during the auto-learn process and sets detection limits precisely for optimal contaminant detection. The best detection mode is automatically selected from 20+ modes based on the product properties and the sensitivity estimation function helps choose suitable test pieces.



Display of estimated detection sensitivity



HIS (High Sensitivity) setting principle



production performance analysis.... brochure.



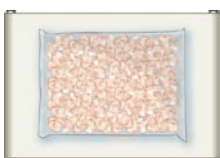


Metal Detector duw-h Series






Lineup

Waterproof

Maximum pass width	Pass height	
w:210 mm 	▶ H: 45 mm → KDS8102BW	KDS810 □ type P.5
	▶ H: 75 mm → KDS8103BW	
	▶ H: 95 mm → KDS8104BW	
w:300 mm 	▶ H: 45 mm → KDS8112BW	KDS811 □ type P.6
	▶ H: 75 mm → KDS8113BW	
	▶ H: 115 mm → KDS8115BW	
w:450 mm 	▶ H: 45 mm → KDS8122BW	KDS812 □ type P.7
	▶ H: 95 mm → KDS8124BW	
	▶ H: 125 mm → KDS8125BW	

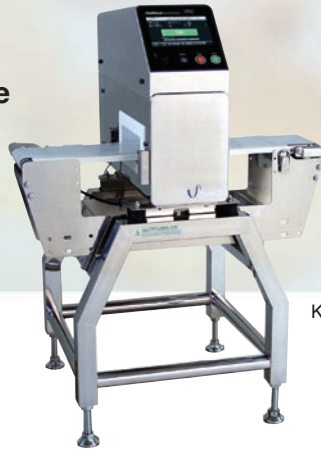
Non-Waterproof

Maximum pass width	Pass height	
w:210 mm 	▶ H: 50 mm → KDS8102BF	KDS810 □ type P.5
	▶ H: 80 mm → KDS8103BF	
	▶ H: 100 mm → KDS8104BF	
w:300 mm 	▶ H: 50 mm → KDS8112BF	KDS811 □ type P.6
	▶ H: 80 mm → KDS8113BF	
	▶ H: 120 mm → KDS8115BF	
w:450 mm 	▶ H: 50 mm → KDS8122BF	KDS812 □ type P.7
	▶ H: 100 mm → KDS8124BF	
	▶ H: 130 mm → KDS8125BF	

KDS810 type

Maximum pass width :

210 mm



KDS8102BW

Waterproof

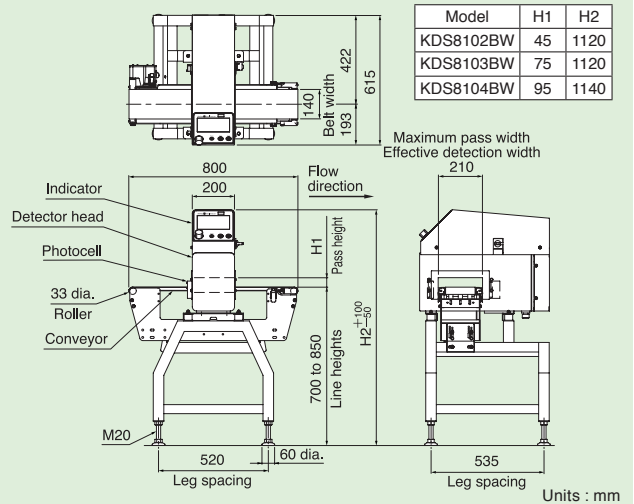
KDS8102BW ...Pass height : **45 mm**

KDS8103BW ...Pass height : **75 mm**

KDS8104BW ...Pass height : **95 mm**

Model	KDS8102BW	KDS8103BW	KDS8104BW
Pass height	45 mm	75 mm	95 mm
Belt width	140 mm		
Maximum product weight <small>Note 1</small>	5 kg [Can support up to 15 kg as an option. However, the belt speed will be 5 to 49 m/min]		
Mass	92 kg	92 kg	94 kg
Protection class	IP66 compliance		
Exterior	Stainless steel (SUS304)		

External Dimensions



Non-Waterproof

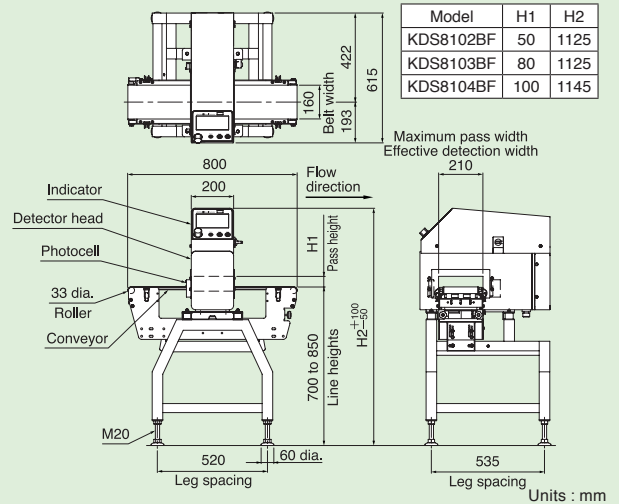
KDS8102BF ...Pass height : **50 mm**

KDS8103BF ...Pass height : **80 mm**

KDS8104BF ...Pass height : **100 mm**

Model	KDS8102BF	KDS8103BF	KDS8104BF
Pass height	50 mm	80 mm	100 mm
Belt width	160 mm		
Maximum product weight <small>Note 1</small>	5 kg [Can support up to 10 kg as an option. However, the belt speed will be 5 to 49 m/min]		
Mass	90 kg	90 kg	92 kg
Protection class	IP30 compliance		
Exterior	Painted [Indicator and detector head: stainless steel (SUS304)]		

External Dimensions



Specifications common to waterproof and non-waterproof

Display	7-inch color TFT LCD
Operation method	Touch panel (Start, Stop, and Home are direct push buttons)
Preset memory	Maximum 200
Product packaging	Both general and aluminum-metallized-packaging products
Detection method	Simultaneous 2-frequency magnetization detection method
Belt speed	10 to 90 m/min (variable speed depending on Product No.)
Metal detection	Rejection signal output and beep, or belt stop and beep
Power requirements	100 to 120 Vac +10% -15% or 200 to 240 Vac +10% -15%, single phase, 50/60 Hz, 200 VA, rush current 62 A (typ.) (20 ms or less)
Environmental conditions	0° to 40°C, relative humidity 30% to 85%, non-condensing
Standard Interfaces	USB2.0, 10BASE-T/100BASE-TX Ethernet

Note1: Sum total of product weight on the conveyor.

Note : The shape (length, width, and height) of products to be inspected varies with the rejector type.

Note : The noise level of the Metal Detectors does not exceed 70 dB (A).

KDS811 type

Maximum pass width :

300 mm



KDS8112BW

Waterproof

KDS8112BW ...Pass height : **45 mm**

KDS8113BW ...Pass height : **75 mm**

KDS8115BW ...Pass height : **115 mm**

Model	KDS8112BW	KDS8113BW	KDS8115BW
Pass height	45 mm	75 mm	115 mm
Belt width	230 mm		
Maximum product weight <small>Note 1</small>	5 kg [Can support up to 15 kg as an option. However, the belt speed will be 5 to 49 m/min]		
Mass	102 kg	102 kg	105 kg
Protection class	IP66 compliance		
Exterior	Stainless steel (SUS304)		

Non-Waterproof

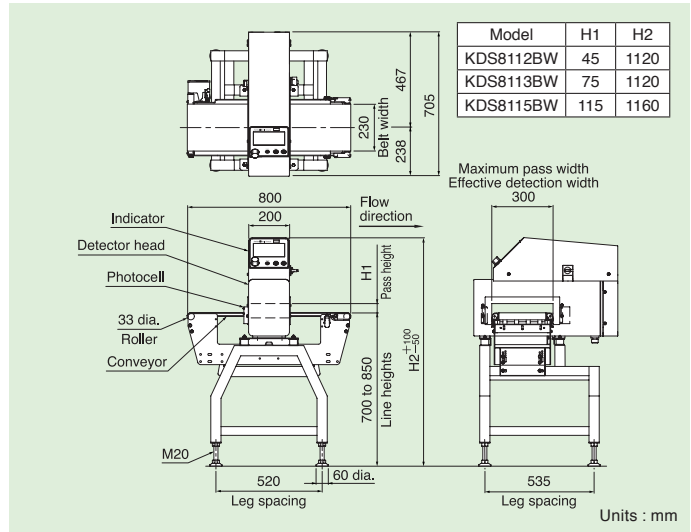
KDS8112BF ...Pass height : **50 mm**

KDS8113BF ...Pass height : **80 mm**

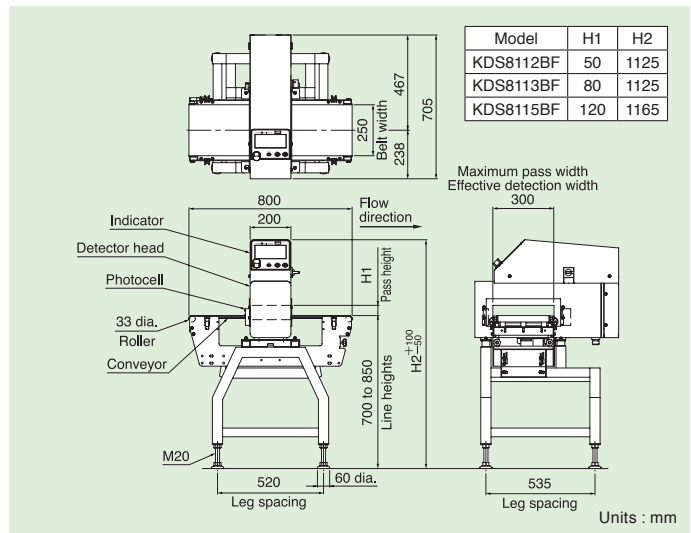
KDS8115BF ...Pass height : **120 mm**

Model	KDS8112BF	KDS8113BF	KDS8115BF
Pass height	50 mm	80 mm	120 mm
Belt width	250 mm		
Maximum product weight <small>Note 1</small>	5 kg [Can support up to 10 kg as an option. However, the belt speed will be 5 to 49 m/min]		
Mass	97 kg	97 kg	100 kg
Protection class	IP30 compliance		
Exterior	Painted [Indicator and detector head: stainless steel (SUS304)]		

External Dimensions



External Dimensions



Specifications common to waterproof and non-waterproof

Display	7-inch color TFT LCD
Operation method	Touch panel (Start, Stop, and Home are direct push buttons)
Preset memory	Maximum 200
Product packaging	Both general and aluminum-metallized-packaging products
Detection method	Simultaneous 2-frequency magnetization detection method
Belt speed	10 to 90 m/min (variable speed depending on Product No.)
Metal detection	Rejection signal output and beep, or belt stop and beep
Power requirements	100 to 120 Vac +10% -15% or 200 to 240 Vac +10% -15%, single phase, 50/60 Hz, 200 VA, rush current 62 A (typ.) (20 ms or less)
Environmental conditions	0° to 40°C, relative humidity 30% to 85%, non-condensing
Standard Interfaces	USB2.0, 10BASE-T/100BASE-TX Ethernet

Note1: Sum total of product weight on the conveyor.

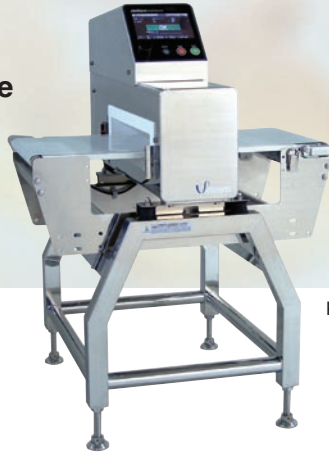
Note : The shape (length, width, and height) of products to be inspected varies with the rejector type.

Note : The noise level of the Metal Detectors does not exceed 70 dB (A).

KDS812 type

Maximum pass width :

450 mm



KDS8122BW

Waterproof

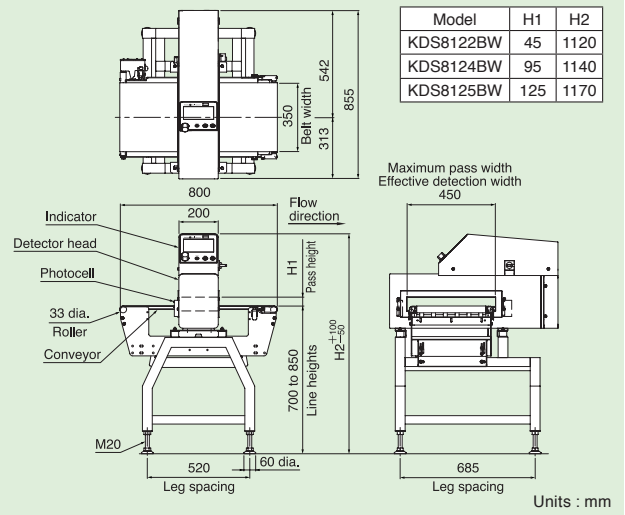
KDS8122BW ...Pass height : **45 mm**

KDS8124BW ...Pass height : **95 mm**

KDS8125BW ...Pass height : **125 mm**

Model	KDS8122BW	KDS8124BW	KDS8125BW
Pass height	45 mm	95 mm	125 mm
Belt width	350 mm		
Maximum product weight <small>Note 1</small>	5 kg [Can support up to 15 kg as an option. However, the belt speed will be 5 to 49 m/min]		
Mass	117 kg	122 kg	125 kg
Protection class	IP66 compliance		
Exterior	Stainless steel (SUS304)		

External Dimensions



Non-Waterproof

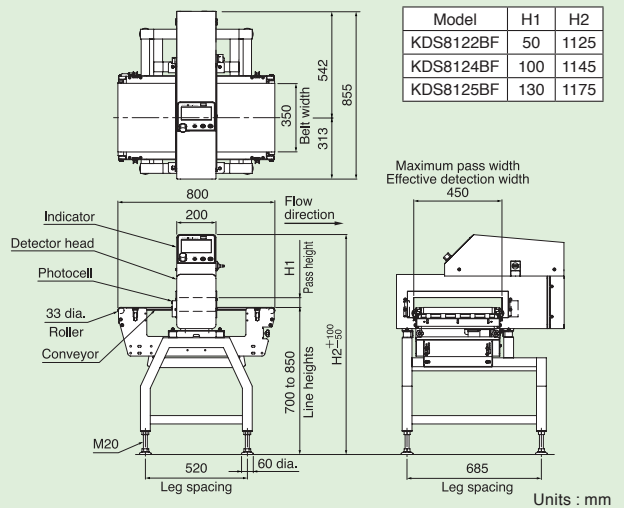
KDS8122BF ...Pass height : **50 mm**

KDS8124BF ...Pass height : **100 mm**

KDS8125BF ...Pass height : **130 mm**

Model	KDS8122BF	KDS8124BF	KDS8125BF
Pass height	50 mm	100 mm	130 mm
Belt width	350 mm		
Maximum product weight <small>Note 1</small>	5 kg [Can support up to 10 kg as an option. However, the belt speed will be 5 to 49 m/min]		
Mass	112 kg	117 kg	120 kg
Protection class	IP30 compliance		
Exterior	Painted [Indicator and detector head: stainless steel (SUS304)]		

External Dimensions



Specifications common to waterproof and non-waterproof

Display	7-inch color TFT LCD
Operation method	Touch panel (Start, Stop, and Home are direct push buttons)
Preset memory	Maximum 200
Product packaging	Both general and aluminum-metallized-packaging products
Detection method	Simultaneous 2-frequency magnetization detection method
Belt speed	10 to 90 m/min (variable speed depending on Product No.)
Metal detection	Rejection signal output and beep, or belt stop and beep
Power requirements	100 to 120 Vac +10% -15% or 200 to 240 Vac +10% -15%, single phase, 50/60 Hz, 200 VA, rush current 62 A (typ.) (20 ms or less)
Environmental conditions	0° to 40°C, relative humidity 30% to 85%, non-condensing
Standard Interfaces	USB2.0, 10BASE-T/100BASE-TX Ethernet

Note1: Sum total of product weight on the conveyor.

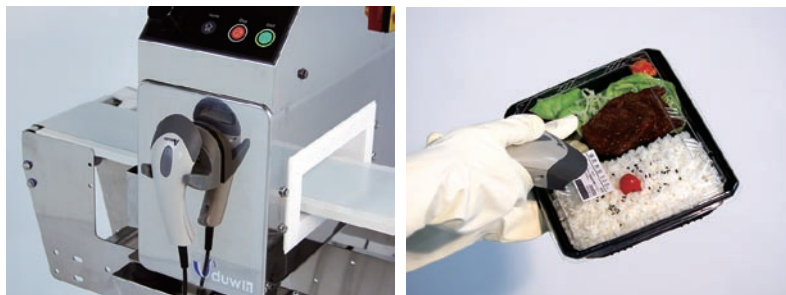
Note : The shape (length, width, and height) of products to be inspected varies with the rejector type.

Note : The noise level of the Metal Detectors does not exceed 70 dB (A).

Option

Barcode reader

Product menus can be automatically selected by scanning product barcodes, allowing for simplified product changeovers even in diverse production lines.



Anritsu

ANRITSU INDUSTRIAL SOLUTIONS CO., LTD.

INTERNATIONAL SALES DEPARTMENT

5-1-1 Onna, Atsugi-shi, Kanagawa-Prf., 243-0032, JAPAN
TEL: +81-46-296-6699 FAX: +81-46-225-8387
<http://www.anritsu-industry.com/en/>

Anritsu Industrial Solutions (Shanghai) Co., Ltd.

3F, No.55, Lane 1505, Zuchongzhi Road, Zhangjiang Hi-tech Park, Pudong New Area, Shanghai 201203, P.R.China
TEL: +86-21-5046-3066 FAX: +86-21-5046-3068

Anritsu Industrial Solutions USA Inc.

1001 Cambridge Drive Elk Grove Village, IL 60007-2453, USA
TEL: +1-847-419-9729 FAX: +1-847-537-8266

Anritsu Industrial Solutions Europe Ltd.

Unit H, Smiths Road, Saxon Business Park, Stoke Prior, Bromsgrove, Worcestershire, B60 4AD, United Kingdom
TEL: +44-(0)845-539-9729 FAX: +44-1527-571-726

ISO14001 CERTIFICATE No.JQA-EM0210
ISO 9001 CERTIFICATE No.JQA-0566
© ANRITSU INDUSTRIAL SOLUTIONS CO., LTD. 2012



- In addition to daily inspection, an annual maintenance check should be carried out.
- To ensure proper operation, read the Operation Manual before using the machine.

Specifications are subject to change without notice.

No part of this catalog may be reproduced without our permission.

Printed on Recycled Paper